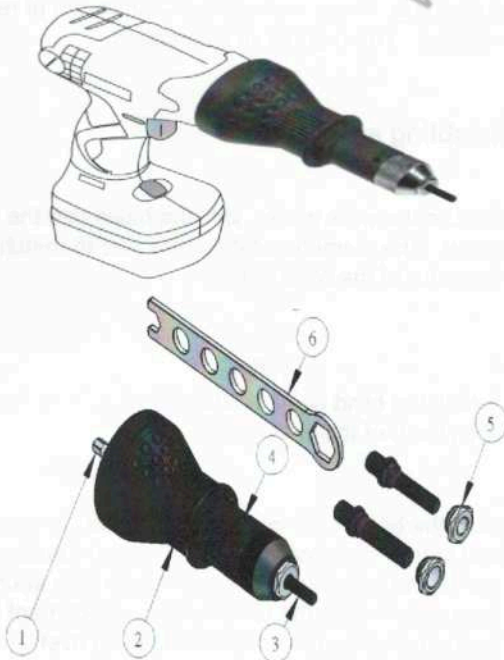


# ABSOLUT SK 3002 M6 NUT RIVETER ADAPTOR



## Safety Note

Please note the following safety notes to avoid malfunctions, damage or physical injury:

- Please observe all safety notes of the used driving tool (drill)
- Always switch off the driving tool and pull the power plug before maintaining the blind nutting attachment, e.g. changing the nosepieces or when not in use.
- Only use the blind nutting attachment as indicated in this manual for setting blind nuts. The unit is not designed for continuous, professional use.
- Always secure the work piece.
- Do not wear loose clothing or jewellery. Tie up hair or clothing cannot get into moving parts.
- Persons with limited physical, sensorial or mental abilities are not allowed to use the unit, unless they are supervised for their safety by a qualified person or are briefed by the responsible person how to use the unit.
- Only use the blind nutting attachment with the included nosepieces.
- Should the unit become damaged do not use it and have it repaired by a professional or contact our customer support department. Do not disassemble the unit or try repairing it yourself.
- Do not continue using the unit if it was damaged or the unit was dropped down. Please contact our customer support service.

## Technical Data

Model No.	GS-0125E
Dimensions	Dia.59 x 172mm
Weight	280g
Nosepiece	M3,M4,M5,M6
Capacity	M3,M4,M5,M6
Hex Shank	1/4 (6.35 mm)
Cordless Drill	12V , 14.4V 18V
Cordless Drive	12V , 14.4V 18V
Reversible electric	Drill/Drive
Reversible pneumatic	Drill/Drive
Min. Torque Strength	15 N.M.
Max. rpm	1000 rpm

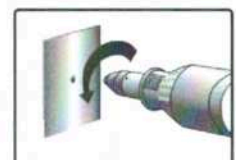
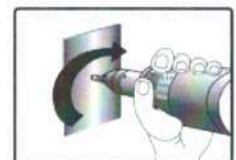
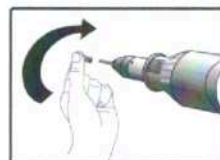
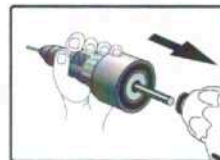
## Overview

1 Hex Shank	1/4 (6.35 mm)
2 Housing	PA+GF
3 Screw	M5 (M6,M4,M3)
4 Sight Window	Blind Nut Loading
5 Nosepiece	M5 (M6,M4,M3)
6 Wrench	1PC

## Assembling and Using

### Before first Use

Remove the unit and the accessory out of the packaging. Keep packaging materials out of reach of children. There is risk of suffocation.



## Assembling and Using

Before first Use

Remove the unit and the accessory out of the packaging. Keep packaging materials out of reach of children. There is risk of suffocation.

### Dear Customers

Please familiarize yourself with the proper usage of the unit by reading and following each chapter of this manual. In the order presented. Keep these operating instructions for future reference.

This operating instruction contains important details for handling the unit. Please pass it on along with the unit if it is handed over to a third party.

#### Please read all safety instructions!

These instructions will make it easier for you to handle the unit and help prevent misunderstandings and possible damage or injury.

### Assembling and Using

1. Secure the work piece. Drill the holes into the work piece. The diameter of the holes has to match the diameter of the blind rivets.
2. Attach the blind riveting attachment as a bit into the drill chuch of the driving tool.
3. Hold the blind riveting attachment firmly in your hand and start the driving tool with left-hand rotation. Allow the tool to run slowly until you hear a click sound. Now the collect inside the blind riveting attachment is opened and ready for inserting a blind rivet.
4. Select the correct nosepiece for the needed blind rivets and screw the nosepiece on the blind riveting attachment by suing the included wrench. Insert a blind rivet into the nosepiece.
5. Select right-hand rotation and make sure the speed of the driving tool is not too high.